



**American Electronic Components, Inc.**

1101 Lafayette Street, Elkhart, IN 46516, Tel: (574) 295-6330, Fax: (574) 293-8013, [sales@aecsensors.com](mailto:sales@aecsensors.com)

**DURAKOOL Series CBC (Closed) 100 Amps**

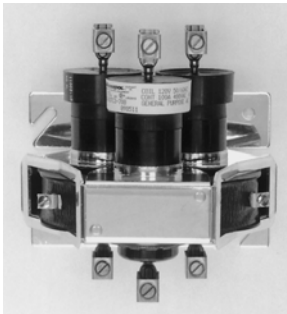
**3 POLE**

Durakool mercury contactors are a favorite choice for high reliability lighting and heating control. Their low maintenance and excellent tungsten in-rush handling characteristics provide dependable long-term operation. CFC (normally open) and CBC (normally closed) contactors are general purpose rated at 100 Amps. Top and bottom compression-lug connectors provide secure connection.

"C" size Durakool contactors have mercury-to-tungsten contacts for easy handling of inductive, tungsten, motor and resistive loads. Tungsten's resistance to arcing erosion prolongs the life of the contactor.

**SPECIFICATIONS**

<b>Maximum Time:</b>	<b>Operate</b>	<b>Release</b>
Normally Open:	90 ms	140 ms
Normally Closed:	200 ms	100 ms
<b>Contact Bounce, Release:</b>	Allowed on normally open models	
<b>Recommended DC Load Polarity:</b>	Top Connector Negative	
<b>Load Connectors:</b>	Pressure Connector #1-8 AWG Cu.	
<b>Coil Terminals:</b>	#6-32 Wire Binding Screw, Max. #12 AWG Cu.	
<b>Breakdown Voltage:</b>	5000 VRMS/Min. Across Contacts	



TYPE/SERIES	DESCRIPTION	CBC (Normally Closed)			
		Part Number	Typical Coil Data		
Volts	DC Ohms		Watts	Amps	
3 Pole	24	CBC3-307	1.4	40.0	4.720
	120	CBC3-304	23	33.0	0.850
	208	CBC3-308	100	23.0	0.345
	240	CBC3-306	110	24.0	0.321
	277	CBC3-309	150	26.9	0.294
	480	CBC3-305	440	24.2	0.162
	12 (DC)	CBC3-310	10	13.4	1.121
	24 (DC)	CBC3-311	40	13.4	0.558

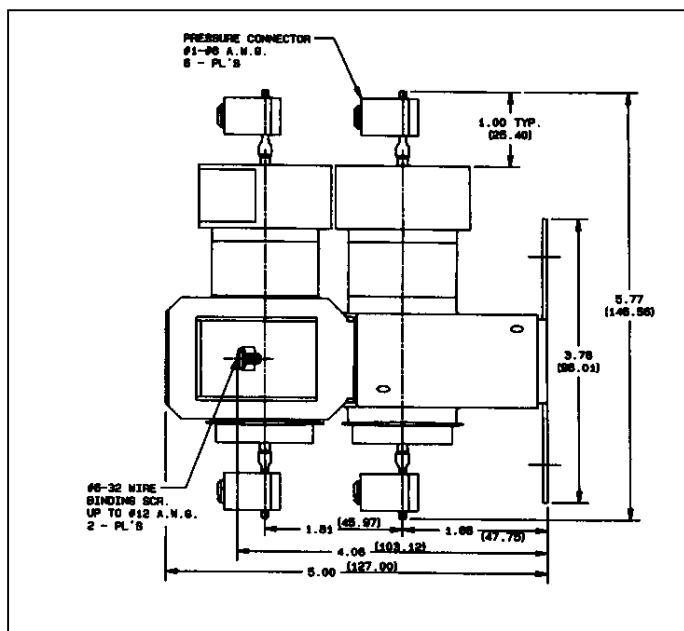
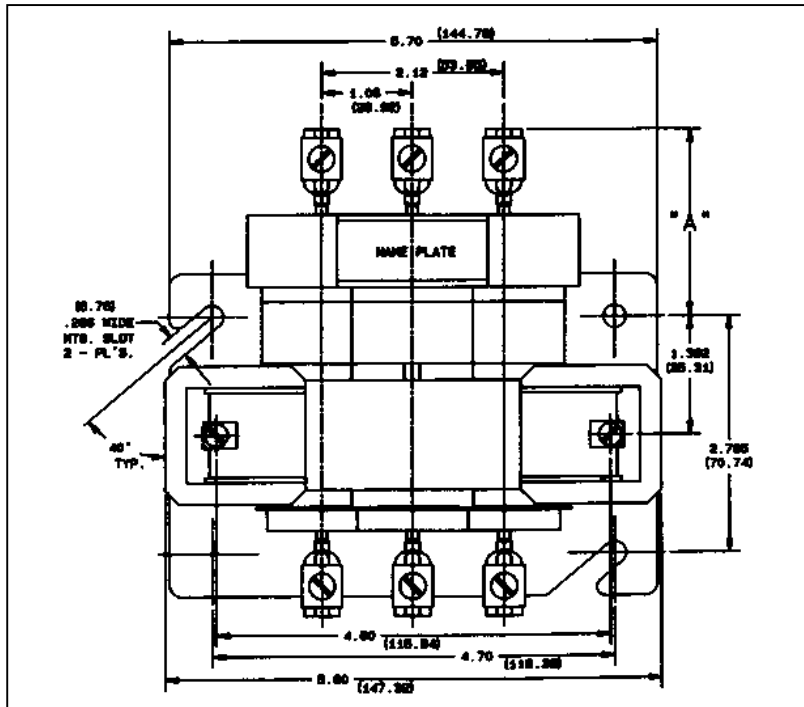
ELECTRICAL RATINGS	GENERAL PURPOSE 0.7/0.8 UL Power Factor						DC			Tungsten Lamp/60 Hz	AC MOTOR LOAD			
	Volts	120	208	240	277	480	600	1-48	120	240	120	1 Phase		3 Phase
SERIES	60 Hz Amps						DC Amps			Amps	KW	Hp	Hp	Hp
CFC 100 (Normally Open)	100	100	100	100	100	100	100	50	30	100	12.0	7.5	10	20
CBC 100 (Normally Closed)	100	90	90	60	60	70	100	50	30	90	10.8	7.5	10	20

*Call (203)270-9391 for price and availability*

**American Electronic Components, Inc.**  
 1101 Lafayette Street, Elkhart, IN 46516, Tel: (574) 295-6330, Fax: (574) 293-8013, [sales@aecsensors.com](mailto:sales@aecsensors.com)

## **DURAKOOL Series CBC (Closed) 100 Amps**

### **3 POLE**



***Call (203)270-9391 for price and availability***