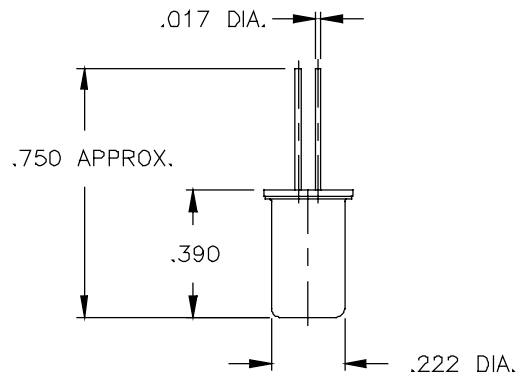
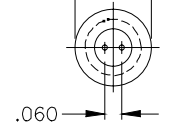


Part No: 20599 A1/2 Series Tip Over Switch – Mercury



- Features:**
- * Un-Insulated
 - * Form: NO/SPST/Mounted as shown
 - * Angles Referenced from vertical
 - * Double Electrode
 - * Hermetically Sealed
 - * Small Package Size
 - * Low Contact Resistance
 - * High Current Capability
 - * Long Life

.270 DIA. REF.
.310 DIA. MAX.
OVER WELD FLASH



Shown in normally open position.

Drawing dimensions in inches.

Make Angle* :	68° - 89° as shown / 50° - 70° with both pins @ center line
Maximum included Angle:	Application Dependent
	* from vertical 0° reference
Switch Ratings:	
Max Switching Voltage:	240VAC / 48VDC
Max Switching Current:	240VAC / 0.25A; 120VAC / 0.5A; 48VDC / 0.5A
Initial Contact Resistance (Max):	600 milli Ohms
Stand Off Voltage (contact to contact):	1500V
Operating Temperature:	-38° to 220°F / -38° to 105°C
Storage Temperature:	-40° to 356°F / -40° to 180° C
Typical number of operations at specified load:	10,000,000
G-Force Activation G-Level/Range:	N/A
Dimensions:	
Weight per 100pcs. Lbs / Kgs:	0.44 / 0.2
Body Length (less leads). Inches / Millimeters:	0.39 / 9.9
Maximum Diameter. Inches / Millimeters:	0.31 / 7.87
Materials:	
Lead Wire Type:	N/A
Lead wire length/skive/termination:	N/A
Finish:	Tin



© American Electronic Components Inc 2006

American Electronic Components Inc.,
1101 Lafayette Street, Elkhart, Indiana. USA
Tel: +1-574-295-6330 Fax: +1-574-293-8013
Email: sales@aecensors.com
<http://www.aecensors.com>